

# **Calvin, Phoebe and Joan Snyder Institute for Chronic Diseases**

## **Strategic Plan 2021 – 2026**

## **VISION**

Powerful discoveries to transform lives

## **MISSION**

Make discoveries that will improve the lives of individuals suffering from chronic and infectious diseases.

## **STRATEGY**

To advance patient care in chronic and infectious disease via personalized medicine individual research projects.

### **Areas of focus include:**

Chronic disease: asthma & chronic obstructive pulmonary disease; diabetes; inflammatory bowel disease & irritable bowel syndrome; liver disease; pain in inflammatory or functional disease; kidney disease

Infectious disease: viral, bacterial and parasitic infection; sepsis

### **Investment will focus on:**

1. Use of patient samples through the **Human Translational Research Facility (HTRF)**
2. Understanding the role of microbiome through the **International Microbiome Center (IMC)**
3. Imaging immune-pathogen interaction through the **Live Cell Imaging Lab (LCI)**

By ensuring the patient is centre-stage in the Institute's research agenda we will make a difference in the lives of patients, by translating discovery-based research to clinical application. We aspire to be recognized as at the vanguard of transformational change in the approach to understanding and combating chronic and infectious diseases.

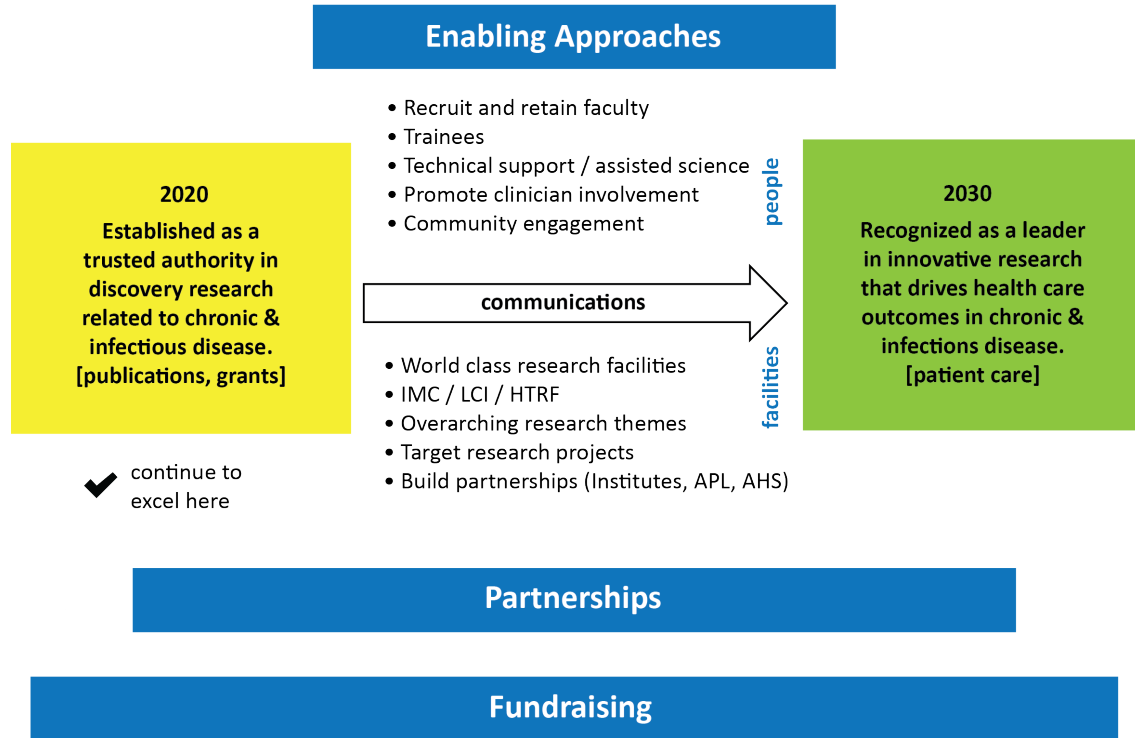
The Snyder Institute is recognized for its strength in discovery research in many areas of expertise and we seek to build from this foundation to measurably deliver on healthcare outcomes for Calgarians, Albertans and Canadians.

To achieve our goals, we operate in a research environment and culture where diverse faculty members, trainees and staff can excel and meet their potential to perform biomedical discovery and translational research.

### **We will:**

- ✓ Target research to advance patient care and health outcomes
- ✓ Retain and recruit top quality researchers motivated by our Mission
- ✓ Maintain, develop and leverage world-class research facilities
- ✓ Provide an exceptional training and education environment
- ✓ Promote clinician-researcher interaction
- ✓ Develop patient & community engagement (social accountability)

## Snyder Strategic Plan Overview



### SPECIFIC GOALS

#### Maintain and develop a strong Institution

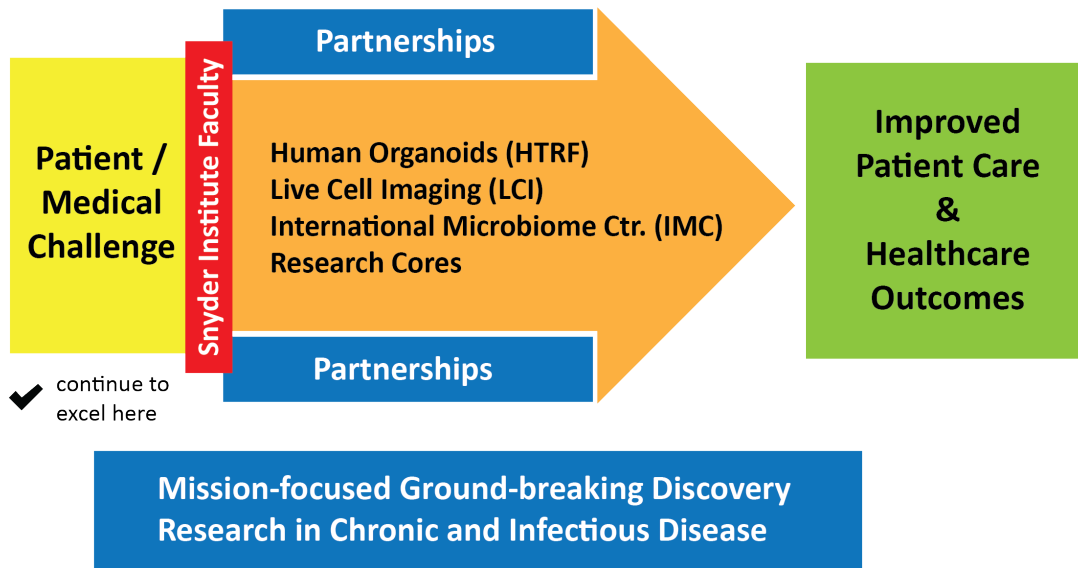
1. Recruit PhD scientists and clinician-scientists for mission-oriented research.
2. Provide a world-class training environment and educational program for graduate students, post-doctoral fellows, and clinical residents.
3. Provide and maintain leading-edge research facilities, infrastructure, equipment, and technical, assisted-science support.
4. Develop a communications strategy (internal & external) with a focus on community engagement.

#### Excel in translational research

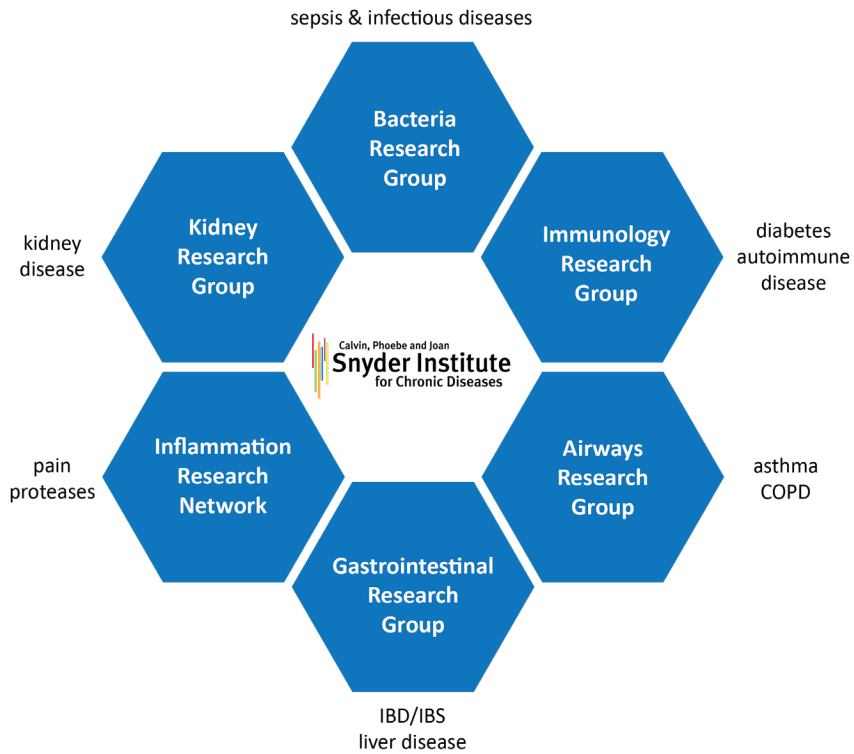
1. To understand, mechanistically, why therapy fails in many patients and develop precision medicine-based approaches to patients with chronic inflammatory diseases.
2. To advance microscopic imaging technology within the Institute, with a focus on implementation and development of techniques to look inside living cells in real time.

3. To advance understanding of the role of the microbiome (bacteria, fungus, virus) in health and disease, and develop microbiome-centered therapeutics.
4. To use expertise in host-pathogen interactions and immunological mechanisms to develop novel anti-pathogen (bacterial, viral, protozoan and helminth) diagnostics and therapeutics.

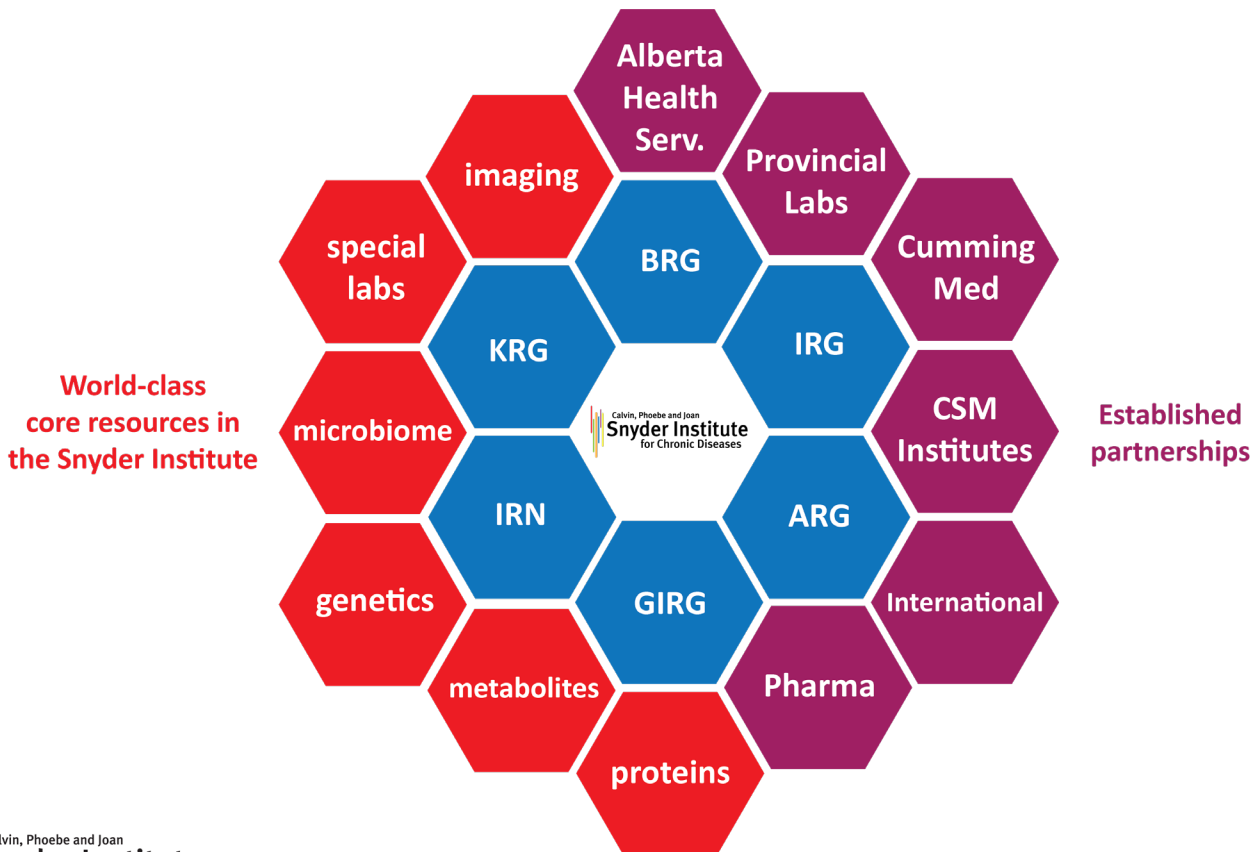
**Snyder Institute – from discovery to improved patient care**



# Health-focused Research in the Snyder Institute for Chronic Disease



DISCOVERY RESEARCH to CLINICAL APPLICATION



DISCOVERY RESEARCH to CLINICAL APPLICATION